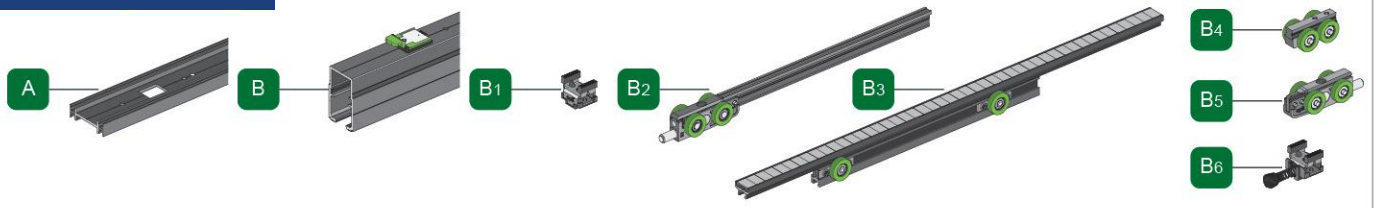


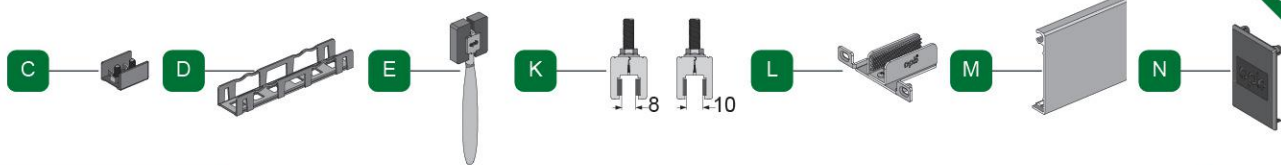
SPEED MAG

BINARI



PORTE IN VETRO CON PINZA NASCOSTA

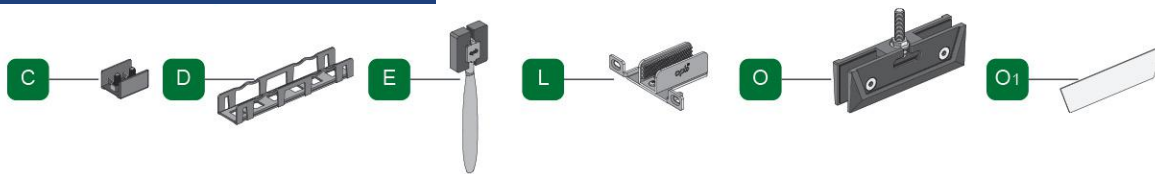
MODELLO A



ESG Glass
recommended

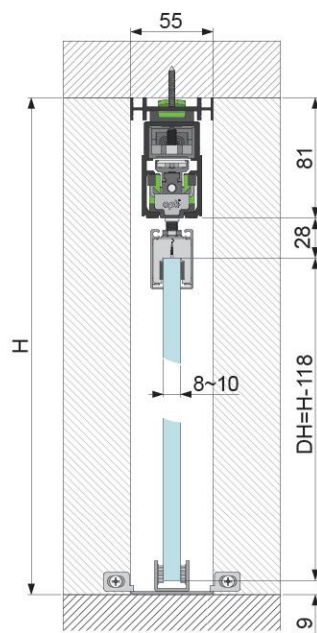
PORTE IN VETRO CON PINZA A VISTA

MODELLO BV

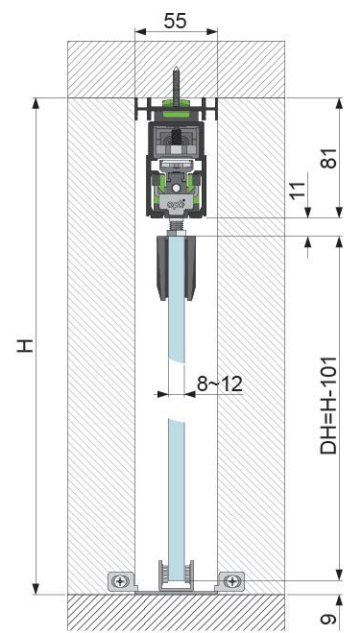


ESG / VSG Glass
recommended

Glass door A

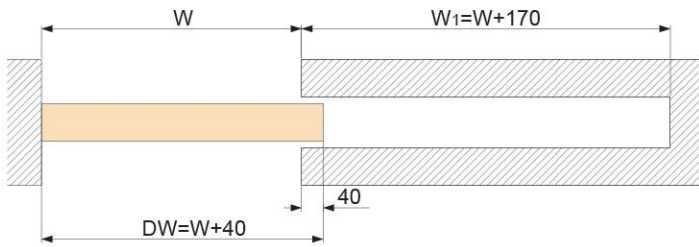


Glass door B



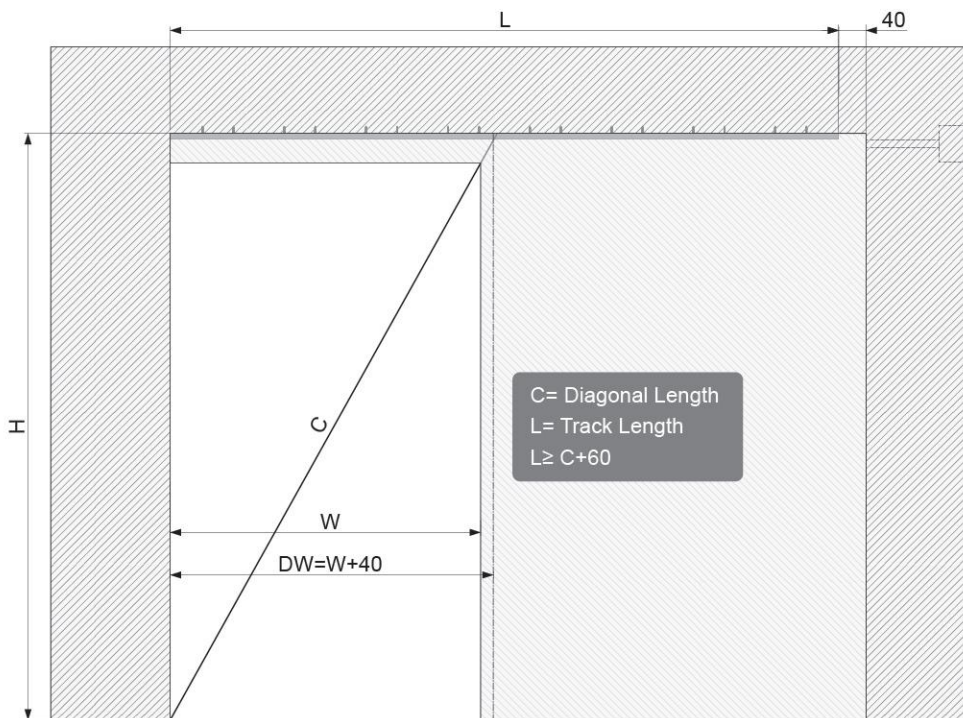
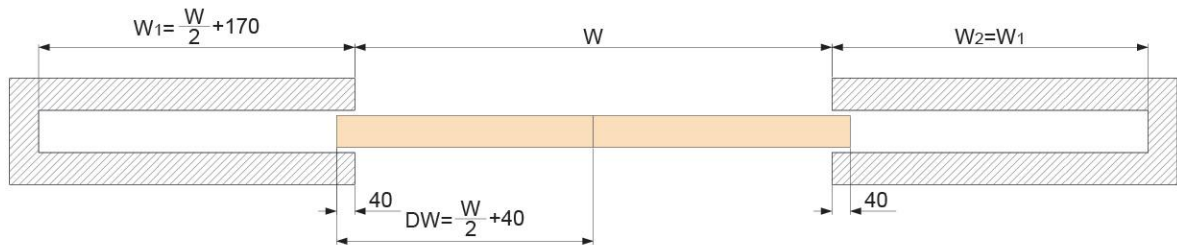
A	B	C
35mm	10mm	55mm
40mm	7.5mm	55mm
45mm	7.5mm	60mm

SISTEMA ANTA SINGOLA



Schienenlänge L Track length L	Lichtes Einbaumaß Door opening size W	Türbreite Door width DW
2100mm	680~980mm	720~1020mm
2800mm	980~1330mm	1020~1370mm

SISTEMA DOPPIA ANTA SINCRONIZZATA



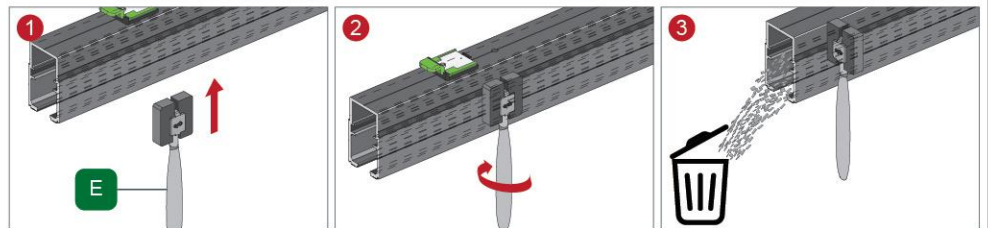
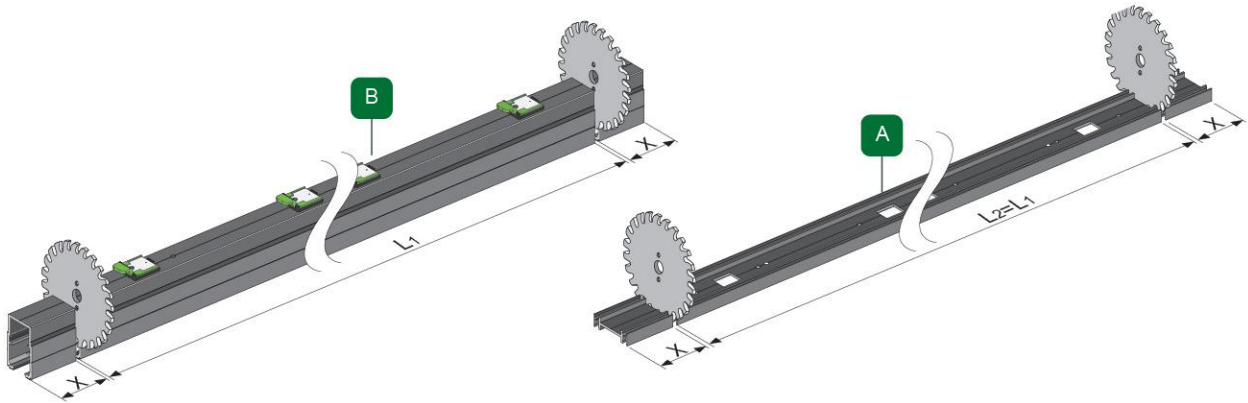
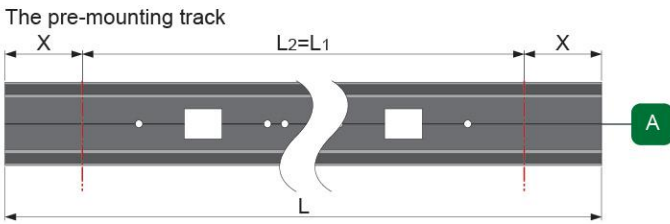
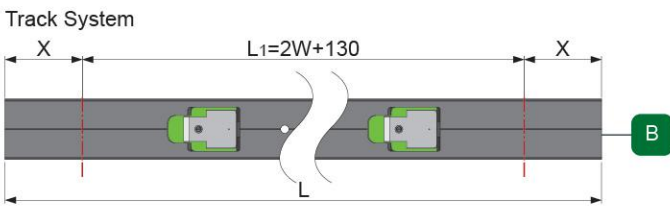
The diagonal size of door opening \geq Track length

1 SISTEMA ANTA SINGOLA

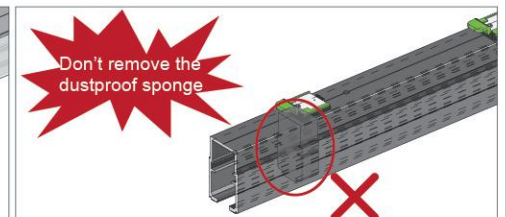
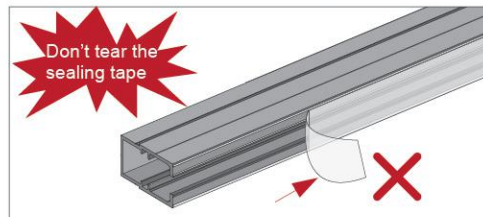
Schienenlänge L Track length L	Lichtes Einbaumaß Door opening size W
2100mm	680~980mm
2800mm	980~1330mm

$X=(L-2W-130)/2$
Note:
W: door opening width
L: the track length delivered
X: the length of cutting at both sides
L1: Track length after cutting

! When the track system and the pre-mounting track is too long, then both sides need to be cut by the same length



!
Please use the cleaning brush to clean the aluminum scraps generated after cutting the track, to keep the inside of the track clean

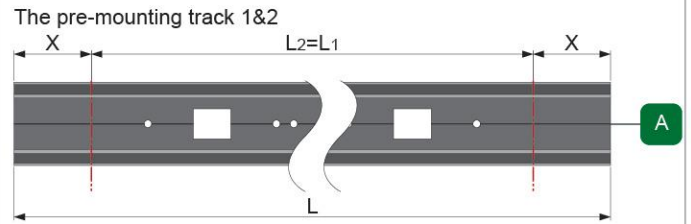
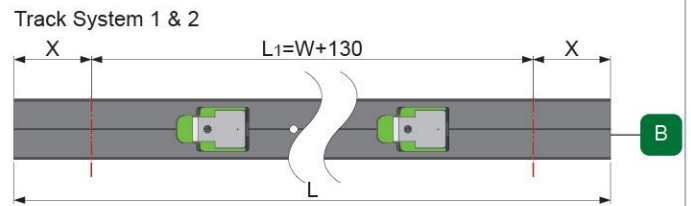


SISTEMA DOPPIA ANTA SINCRONIZZATA

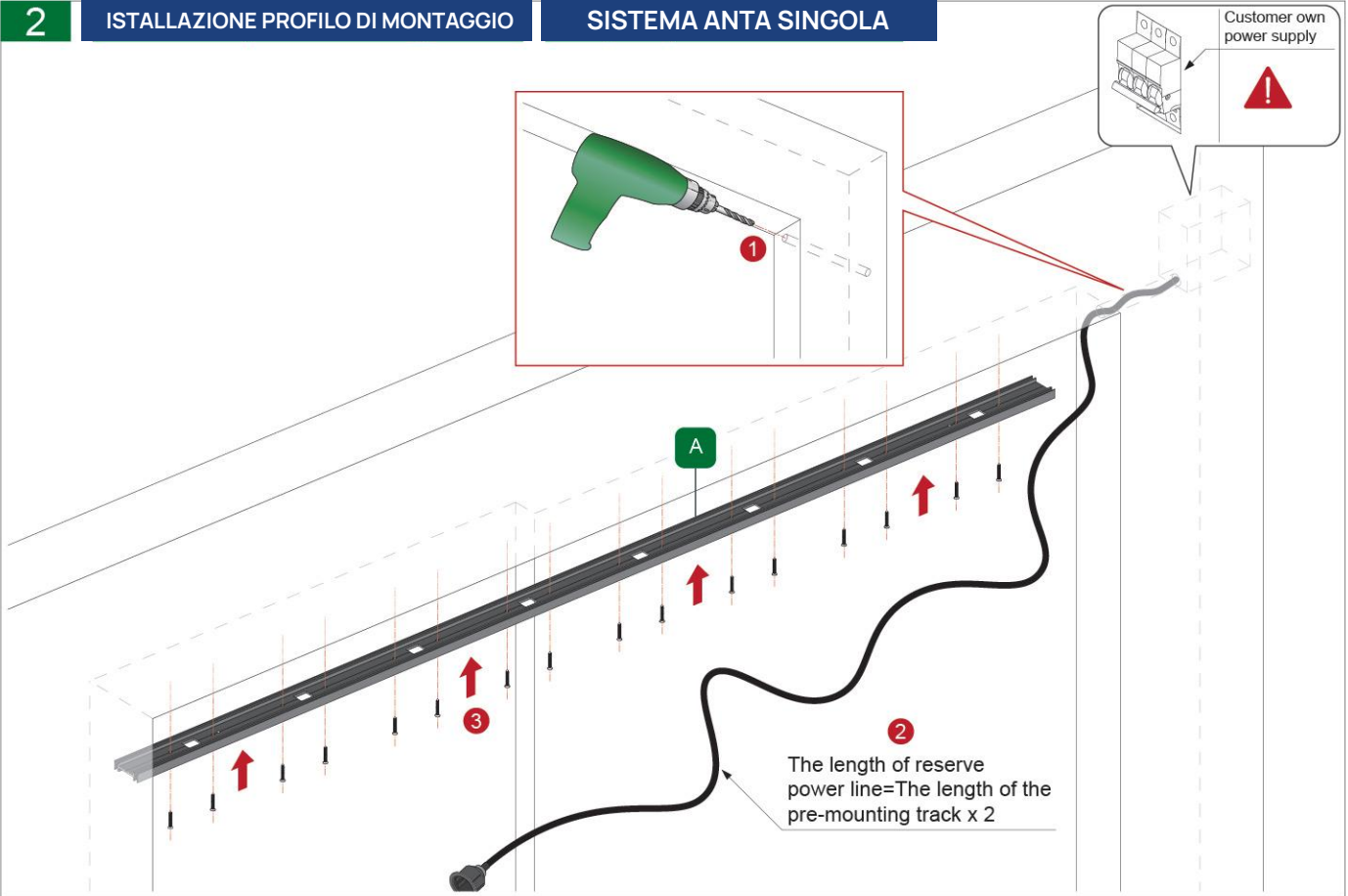
Schienenlänge L Track length L	Lichtes Einbaumaß Door opening size W
(2100x2)mm	1360~1960mm
(2800x2)mm	1960~2660mm

$X=(L-W-130)/2$
Note:
W: door opening width
L: the track length delivered
X: the length of cutting at both sides
L1: Track length after cutting

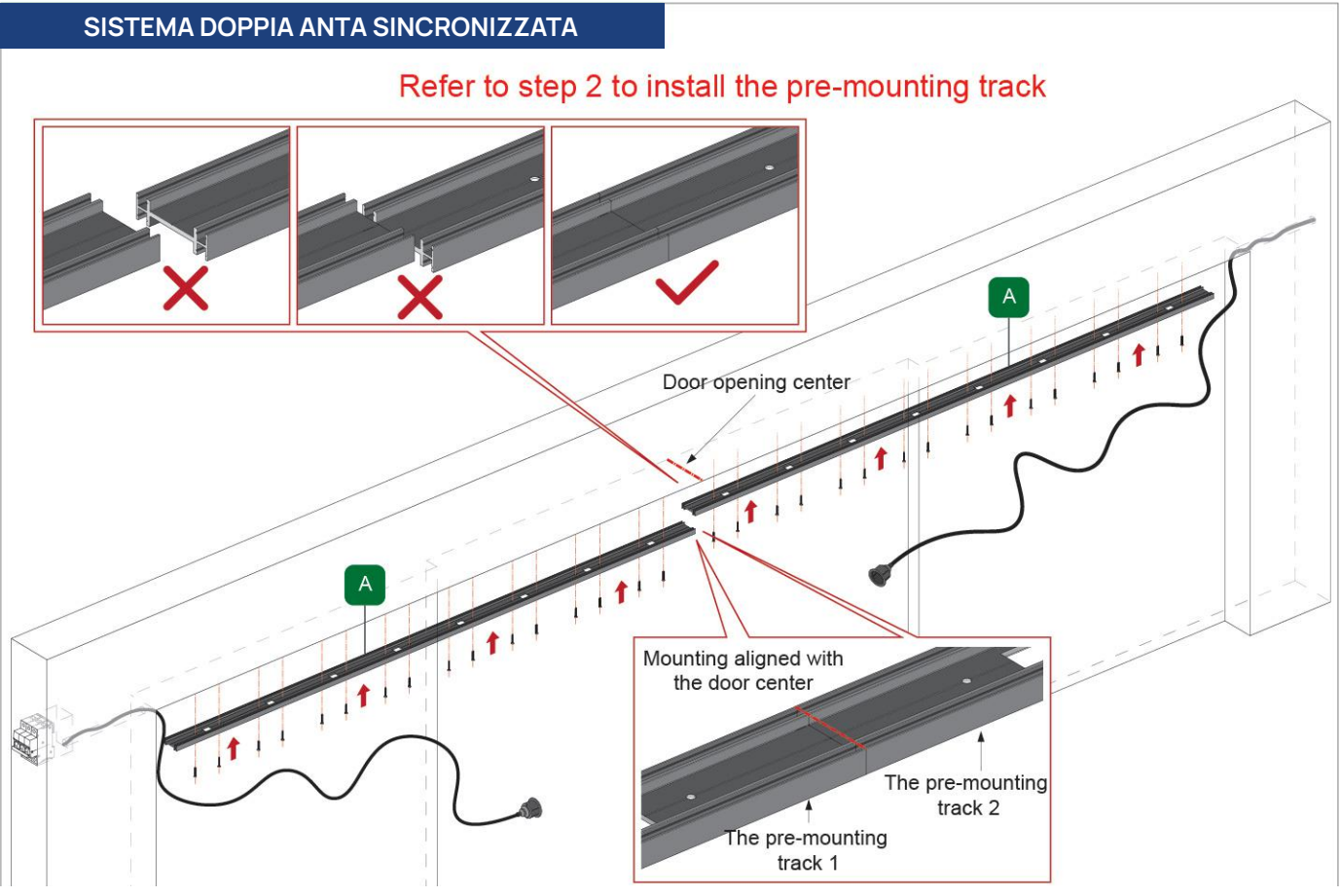
! When the track system 1&2 and the pre-mounting track is too long, then both sides need to be cut by the same length

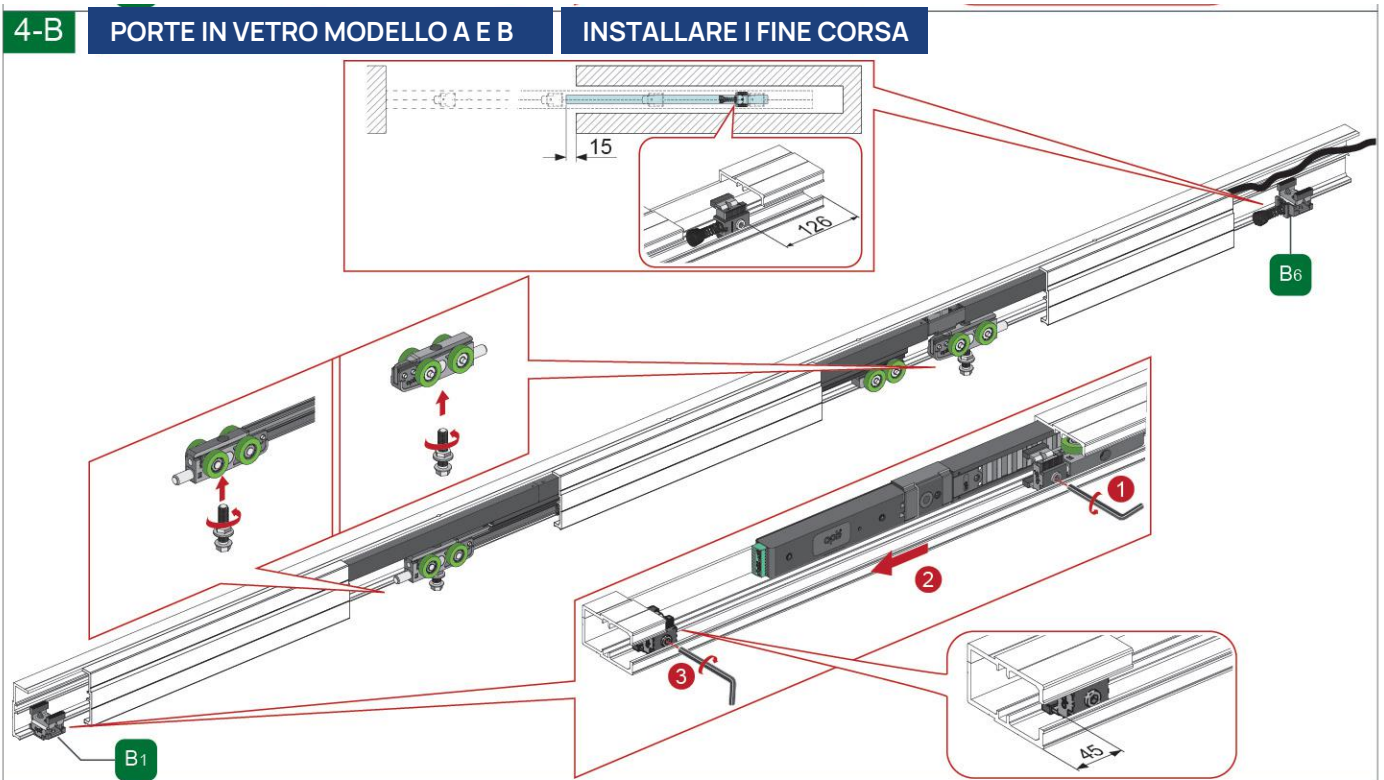
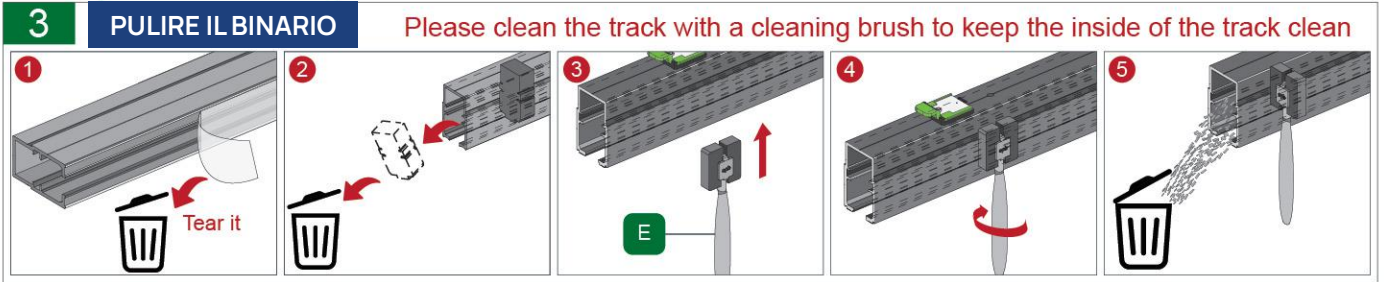


2 **ISTALLAZIONE PROFILO DI MONTAGGIO** **SISTEMA ANTA SINGOLA**



SISTEMA DOPPIA ANTA SINCRONIZZATA

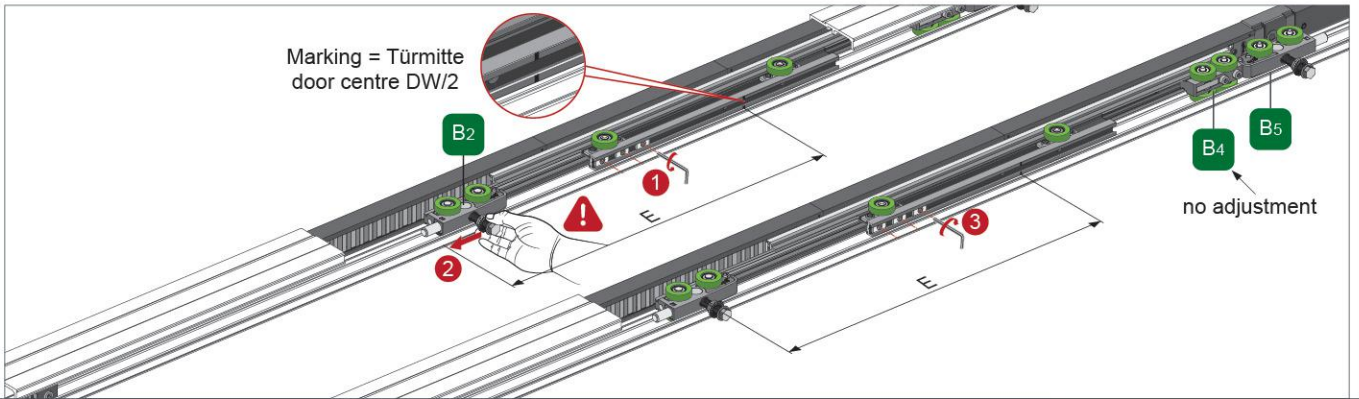
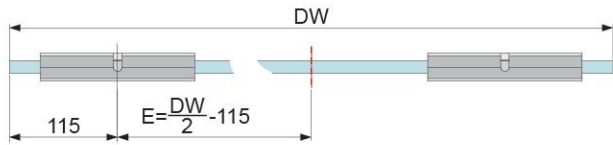




5-B

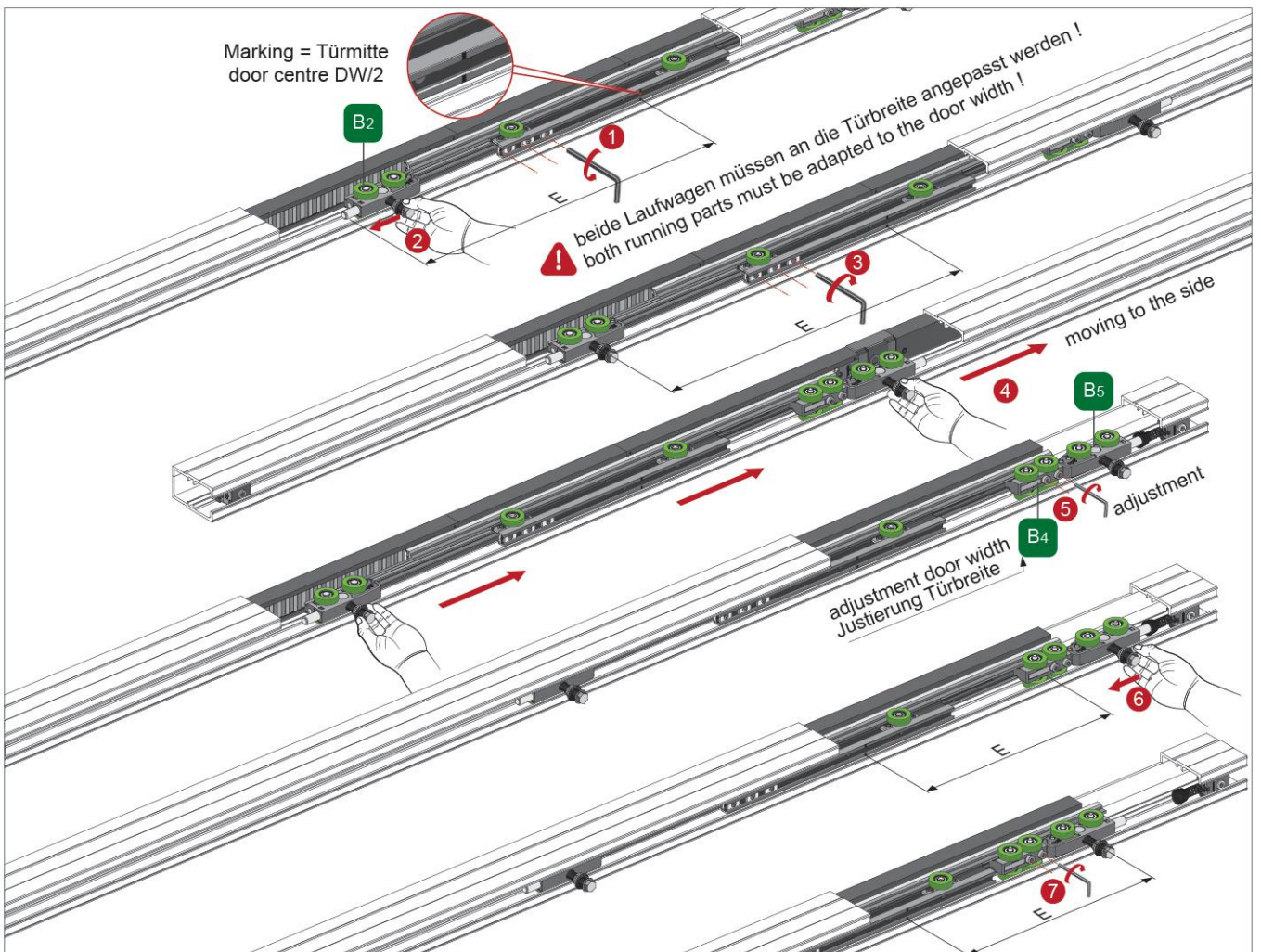
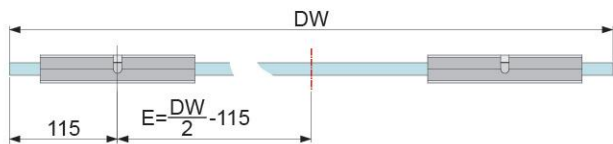
ALLONTANARE I CARRELLI SE NECESSARIO

Schienenlänge L Track length L	Lichtes Einbaumaß Door opening size W	Türbreite Door width DW
2100mm	680~980mm	865~1020mm
2800mm	980~1330mm	1215~1370mm

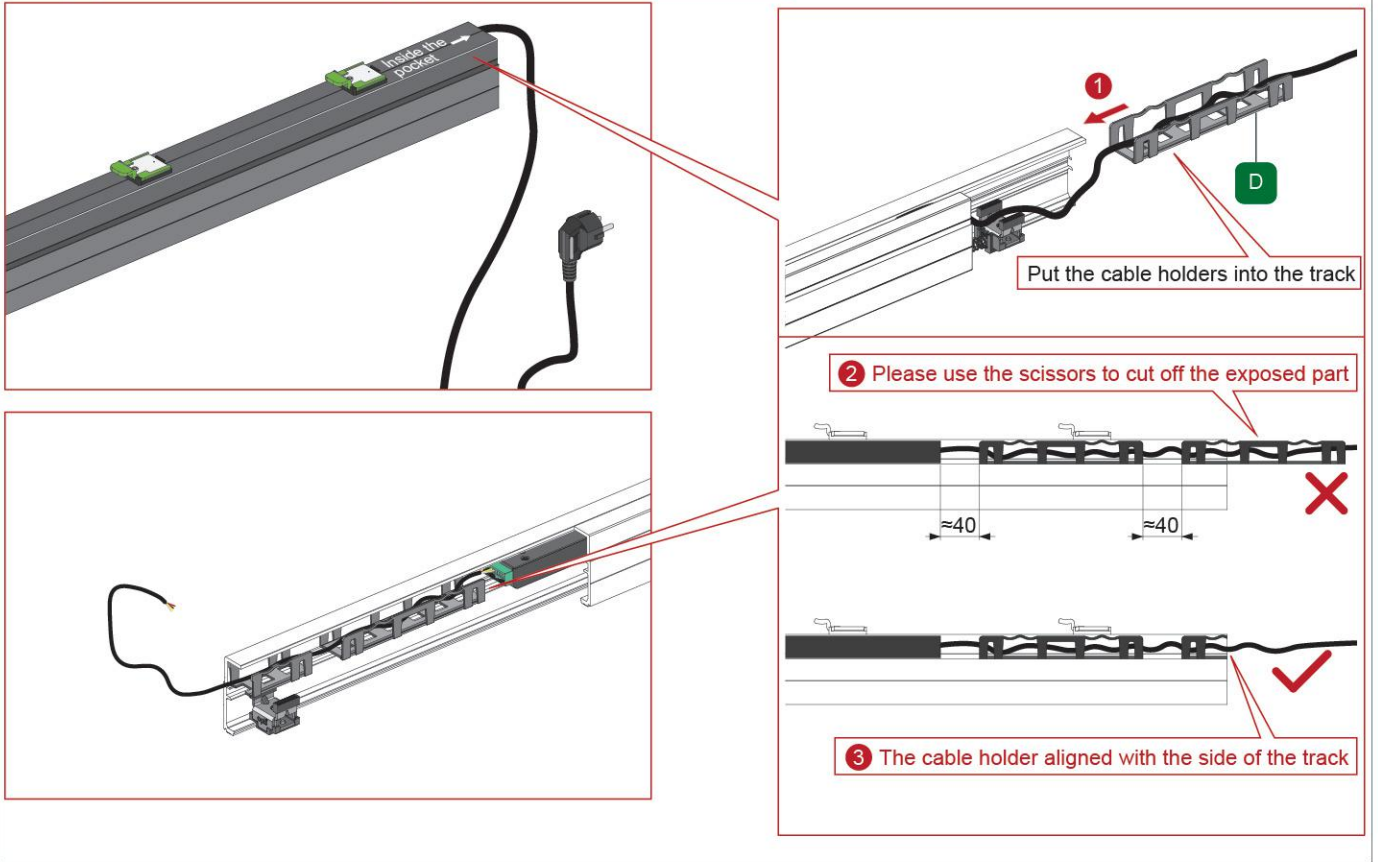


AVVICINARE I CARRELLI SE NECESSARIO

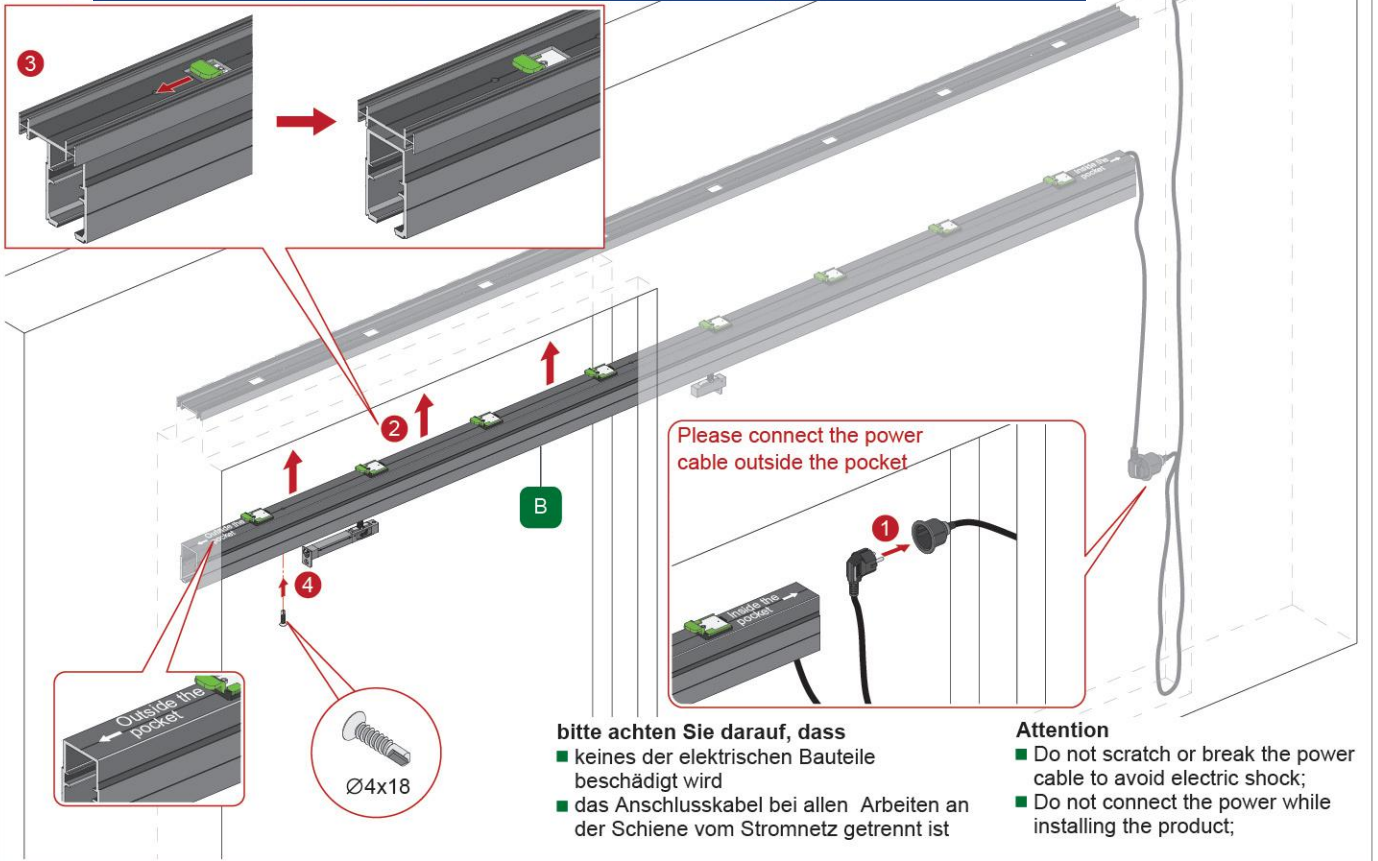
Schienenlänge L Track length L	Lichtes Einbaumaß Door opening size W	Türbreite Door width DW
2100mm	680~980mm	720~865mm
2800mm	980~1330mm	1020~1215mm



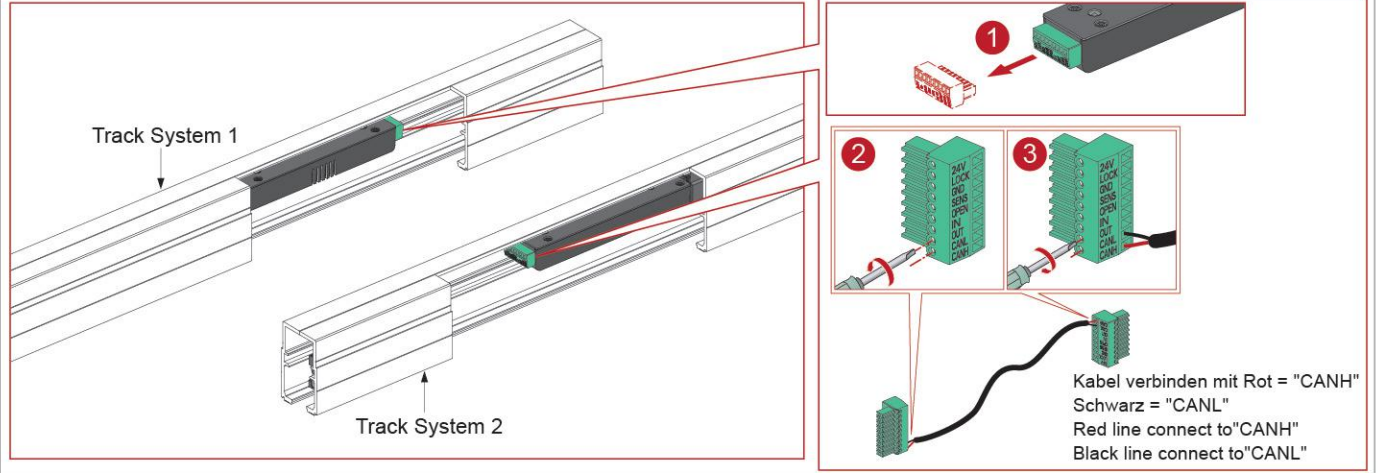
6 INSTALLAZIONE CAVO DI ALIMENTAZIONE



7 INSTALLAZIONE BINARIO

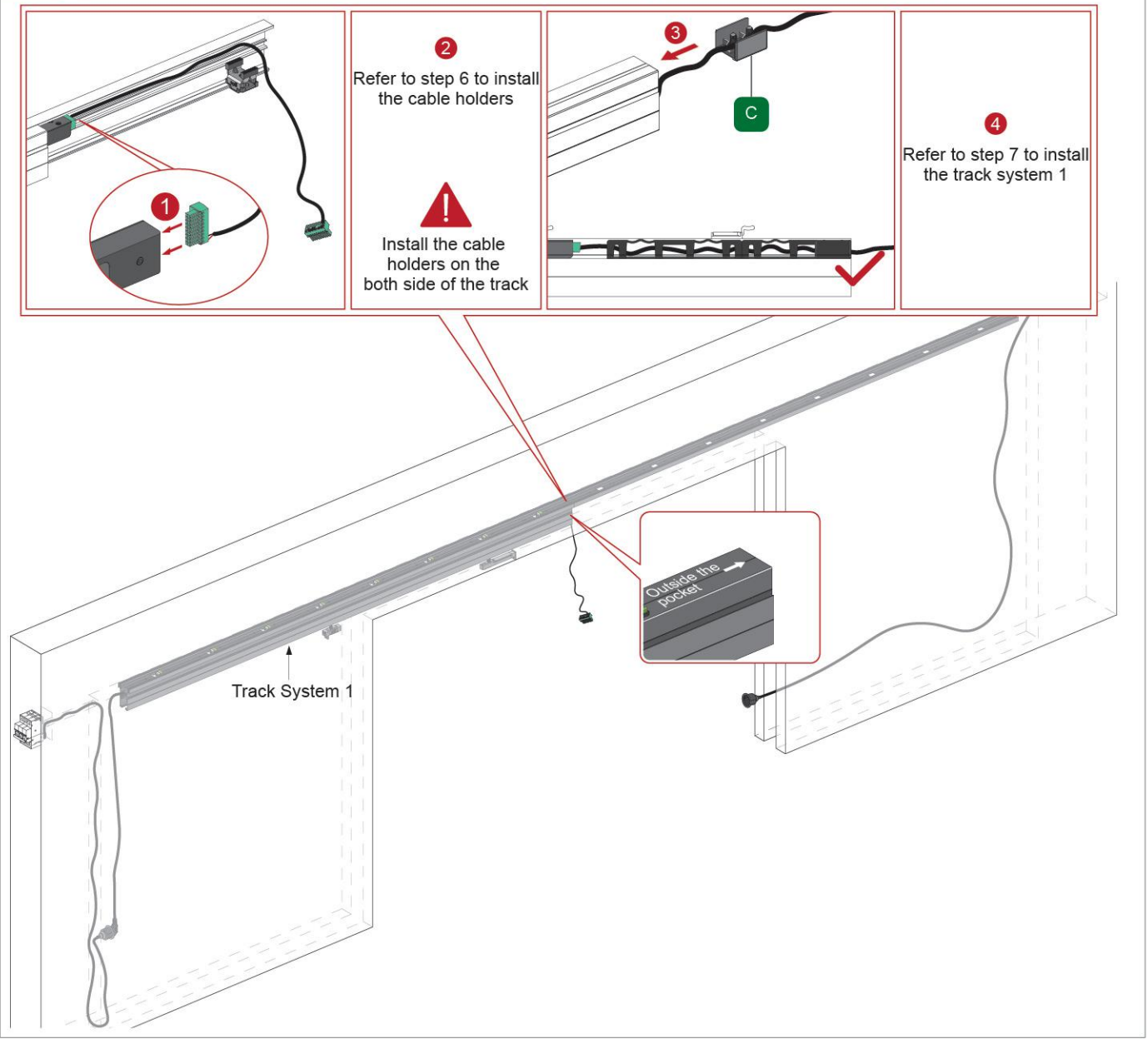


8 SISTEMA DOPPIA ANTA SINCRONIZZATA



9 SISTEMA DOPPIA ANTA SINCRONIZZATA


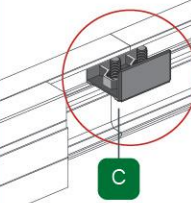
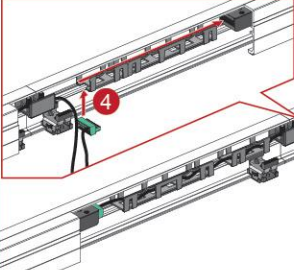
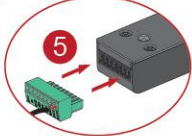
INSTALLAZIONE BINARIO 1

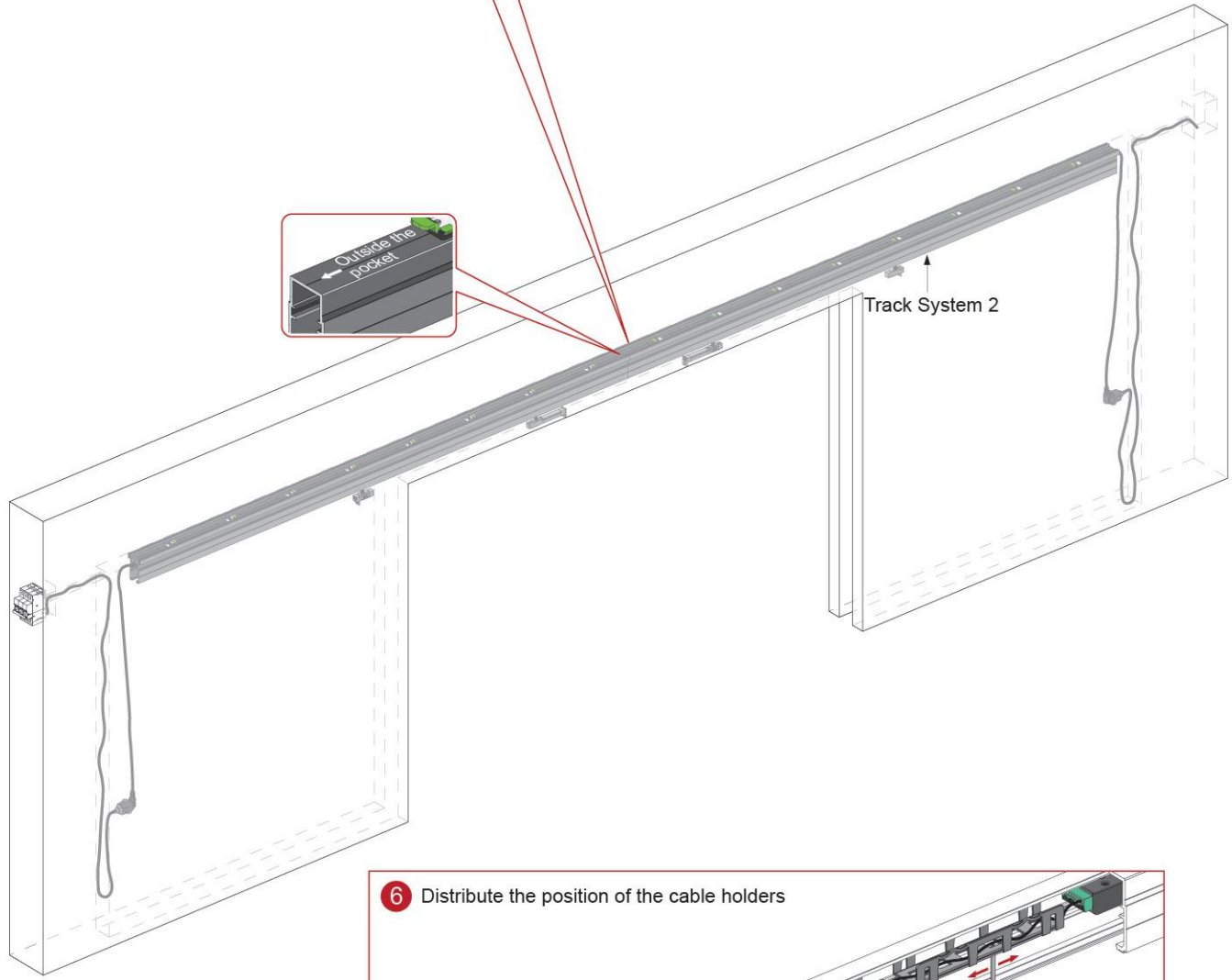


10

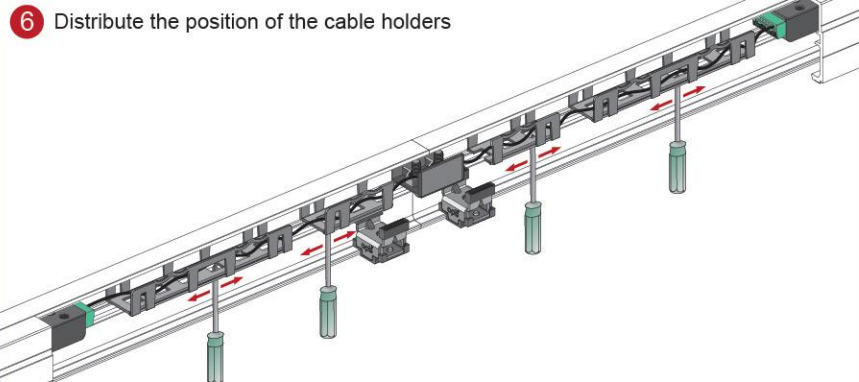
SISTEMA DOPPIA ANTA SINCRONIZZATA

INSTALLAZIONE BINARIO 2

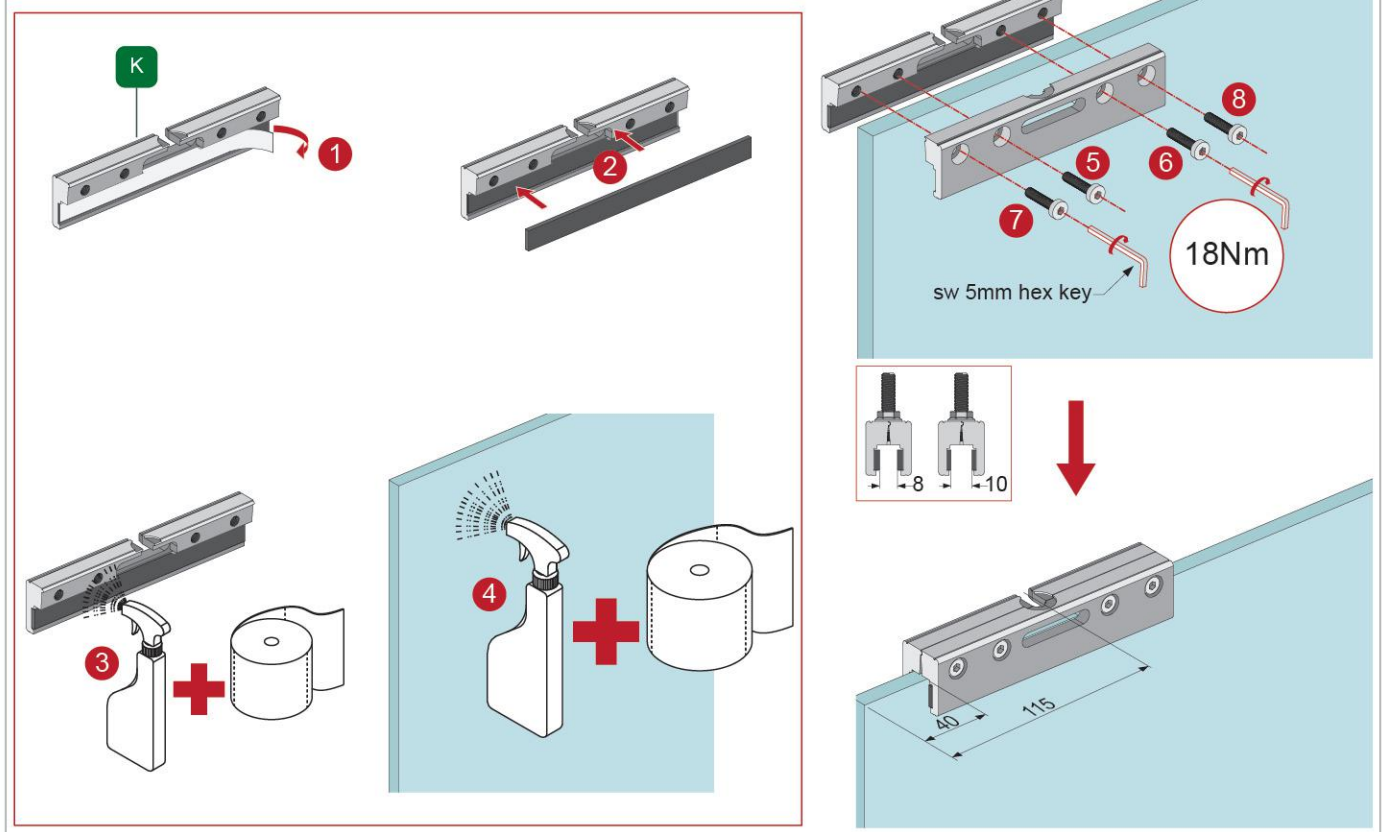
<p>1 Refer to step 6 to install the cable holders</p>  <p>Install the cable holders on the both side of the track</p>	<p>2 Put one connector to both tracks and fix it</p>  <p>C</p>	<p>3 Refer to step 7 to install the track system 2</p>	<p>4</p>  <p>5</p> 
---	---	---	--



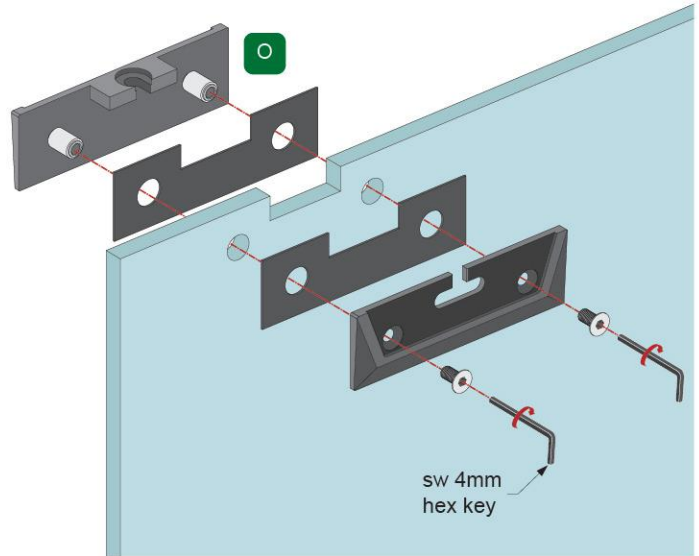
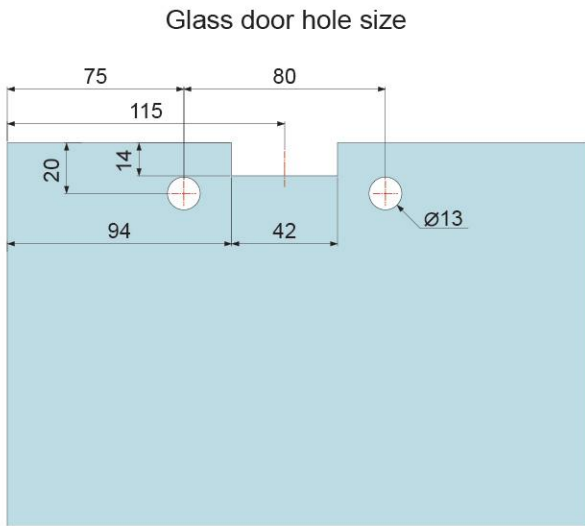
6 Distribute the position of the cable holders



11-B INSTALLAZIONE PINZA VETRO MODELLO A



11-C INSTALLAZIONE PINZA VETRO MODELLO B



8mm glass with 4 pieces of plastic sheet
10mm~12mm glass with 2 pieces of plastic sheet

12-B INSTALLAZIONE ANTA

